

CONLAY

KUALA LUMPUR CITY CENTRE

**THE BEAUTY OF CONLAY.
IT'S WHAT YOU *DON'T* SEE**

The quiet strength behind the soaring form.
The artistry of fins that shade the sun, yet seed the light.
The iconic picture-framed façade that forms apertures
of ever-changing city views.

The warm throw of light against a finely textured wall,
thoughtfully placed to light your way home.
The finely-crafted symphony of stone, timber, marble
and leather, that cocoons and soothes your soul.
The exquisite carpentry that hides the clutter of life,
yet keeps it within easy reach.

The roots of majestic raintrees that enrich the soil of
lush, serene gardens.
Pools and workout zones curated to energise your spirit
and stretch your imagination.

E&O's renowned hospitality and craftsmanship, woven
into Kerry Hill's finest work in resort and space design.
The legacy of a legendary architect, a placemaking
artist.

An oasis of luxury in a busy, dynamic world city.
The insightful compromise of luxury and restraint.

**CONLAY BY E&O AND MITSUI FUDOSAN
REAL LUXURY IS IN THE EXPERIENCE**



KERRY HILL'S VISION FOR CONLAY

The exclusive boulevard where Conlay stands has long been the enclave of Kuala Lumpur's influencers and elites. Sultans chose this leafy neighbourhood for their palaces, called *istana*, within the capital city.

In keeping with the address, the team at Kerry Hill Architects in collaboration with GDP Architects have designed a soaring tower that captures the neighbourhood's rich and vibrant heritage, yet pays tribute to Kuala Lumpur's stature as a world city.

The result is a contemporary, tropical tower with a striking architectural form, that carefully melds modernity with elegance and luxury. A distinctive fin-lined, picture-framed façade that stands out in the city skyline, and captures panoramic views of the surroundings. It is a calm and elegant urban resort, located in the heart of a vibrant metropolis.

THE DESIGN PHILOSOPHY: CRAFTED SIMPLICITY

Conlay has been carefully crafted to speak the language of modern architecture, whilst paying tribute to the location's stellar heritage. The building's sleek lines belie the fine craftsmanship, artistry, and respect for place, space and culture that has been seamlessly woven into every detail of this striking 52-storey structure.

The result is a tribute to the coming together of different partners with shared philosophies, to create a singular landmark of understated luxury.

LANDMARK PROJECTS BY KERRY HILL ARCHITECTS

CLOCKWISE FROM TOP LEFT

Amanemu, Shima-shi, Japan

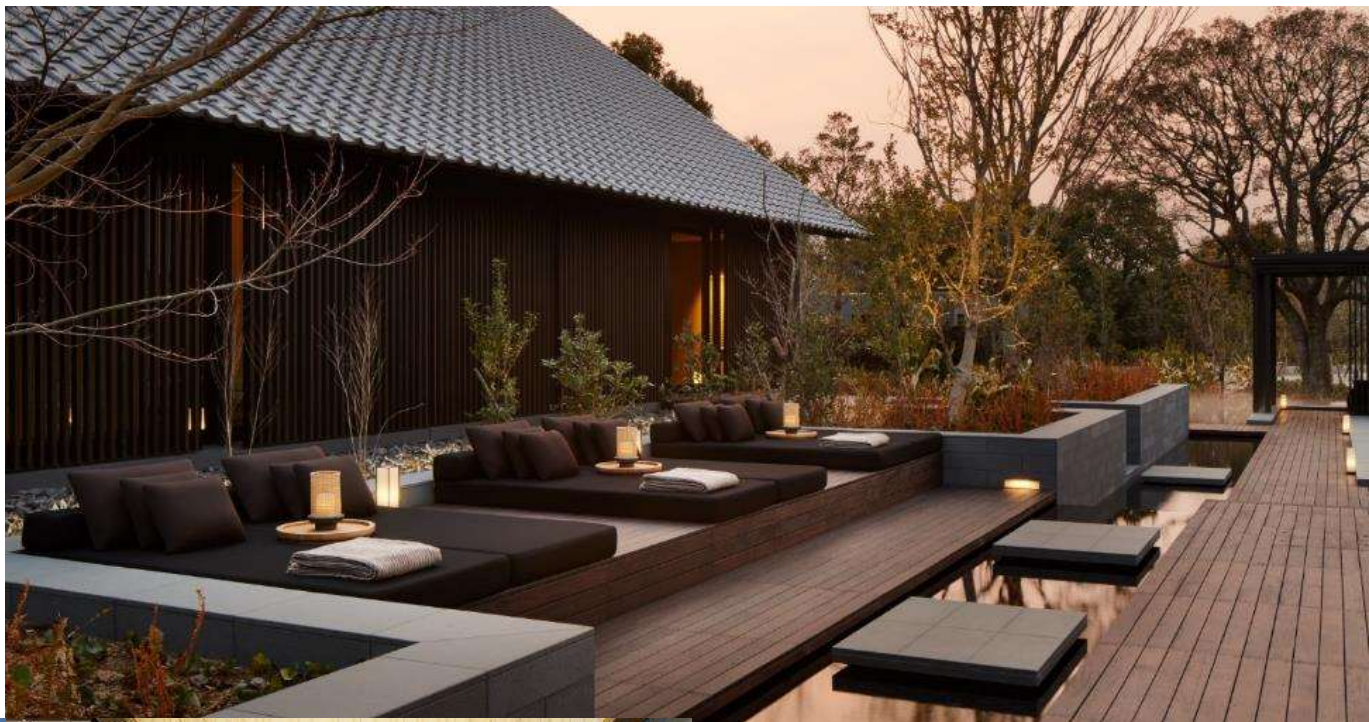
Amanyangyun, Shanghai

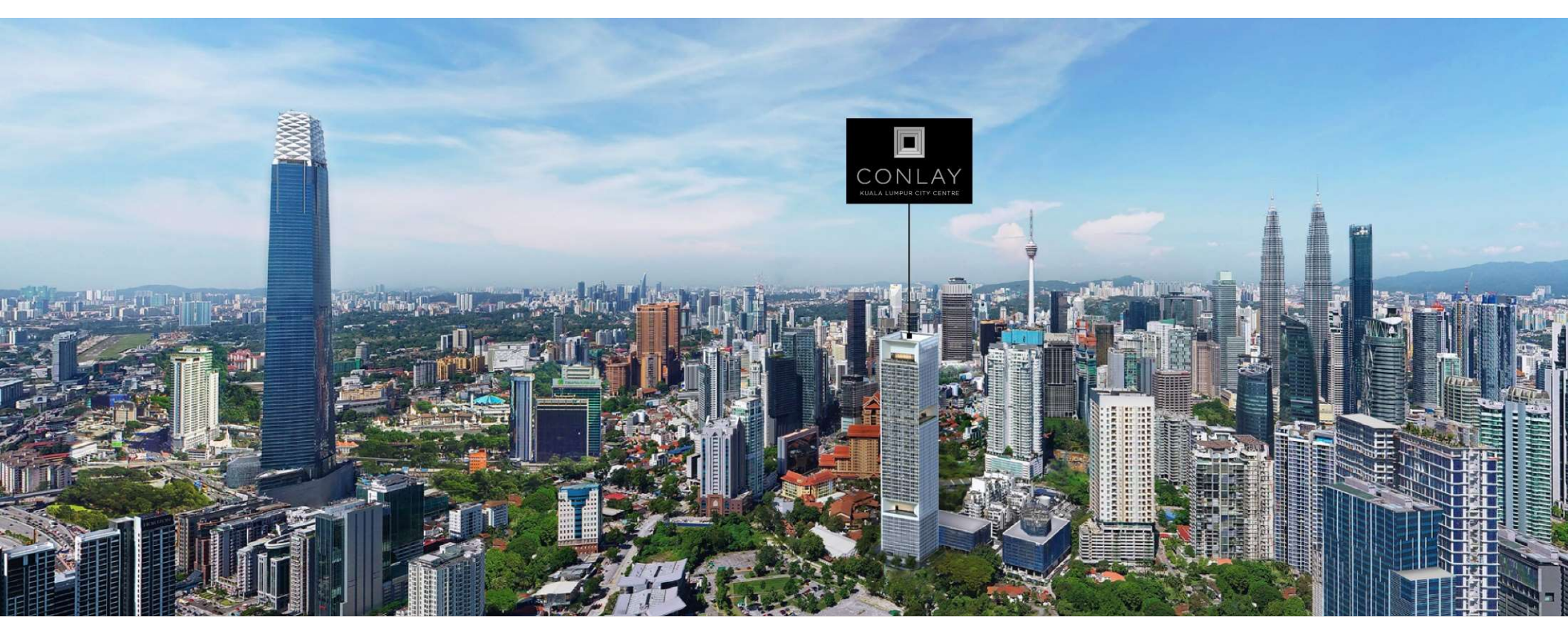
Aman Tokyo, Japan

Martin No. 38, Singapore

The Sukhothai Residences, Bangkok

The Datai, Langkawi

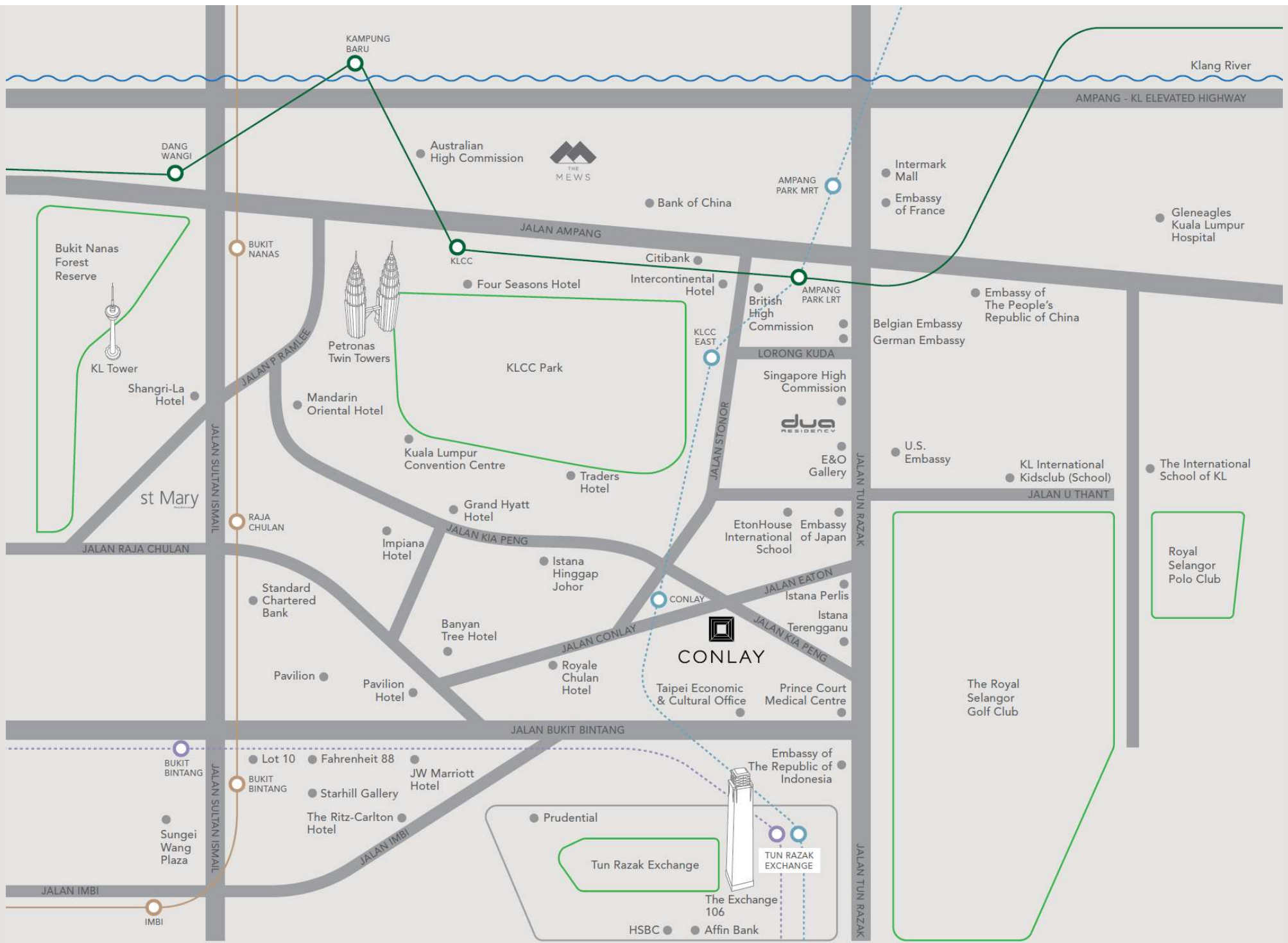




REAL LUXURY POSITIONS YOU WELL

The location of Conlay is quite possibly one of the best places from which to access all that this world city has to offer – the dynamic financial district, world-renowned shopping, a smorgasbord of dining options, international standard healthcare, as well as education, embassies, arts and culture. All within easy reach through a myriad of transportation links.

Whether you choose to go for a walk in the nearby park, or travel further afield for business, pleasure or leisure, your connections are literally at your doorstep. Choose from taxis to ride-hailing services, the LRT and MRT, or simply drive yourself to where you need to go – you can be sure to reach your destination effortlessly and quickly.



..... MRT Sungai Buloh - Putrajaya Line

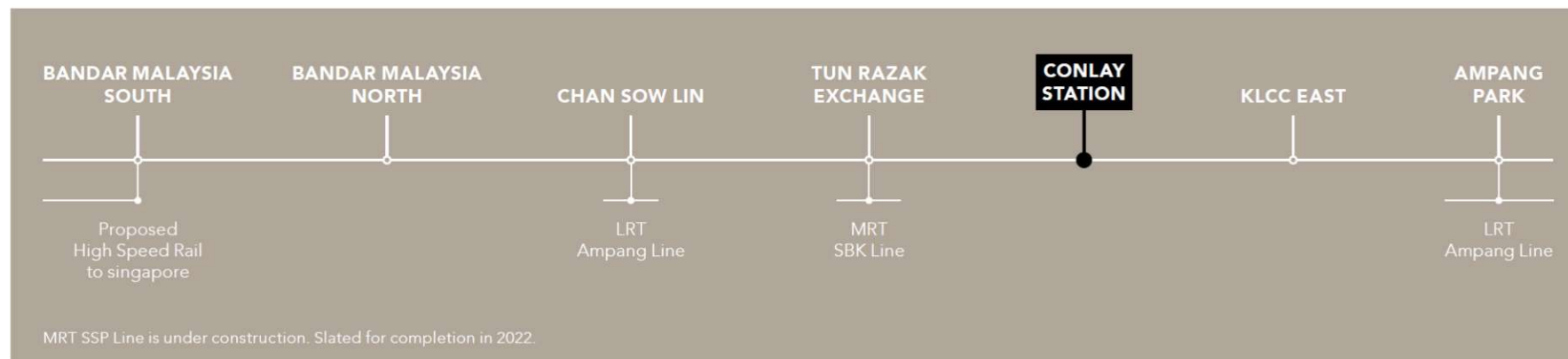
..... MRT Sungai Buloh - Kajang Line

—— LRT Kelana Jaya Line

—— KL Monorail Line



CONNECTIVITY AT YOUR DOORSTEP



DISTANCES TO VARIOUS DESTINATIONS

- Located next to Conlay MRT Station
- Across from the Conlay Station Integrated Development, comprising 3 office towers with a podium, shopping mall and retail plaza (expected completion of Phase 1 in 2020)
- One MRT stop to KLCC East and TRX Station
- Direct access to proposed High Speed Rail to Singapore at Bandar Malaysia South MRT Station
- Walking distance to Pavilion Shopping Mall, KL and Bukit Bintang shopping belt.

NORTH EAST



NORTH WEST



SOUTH EAST

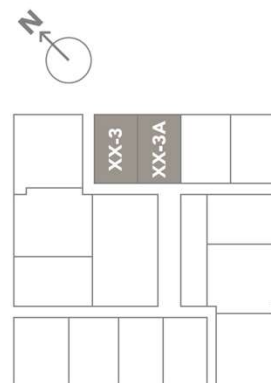
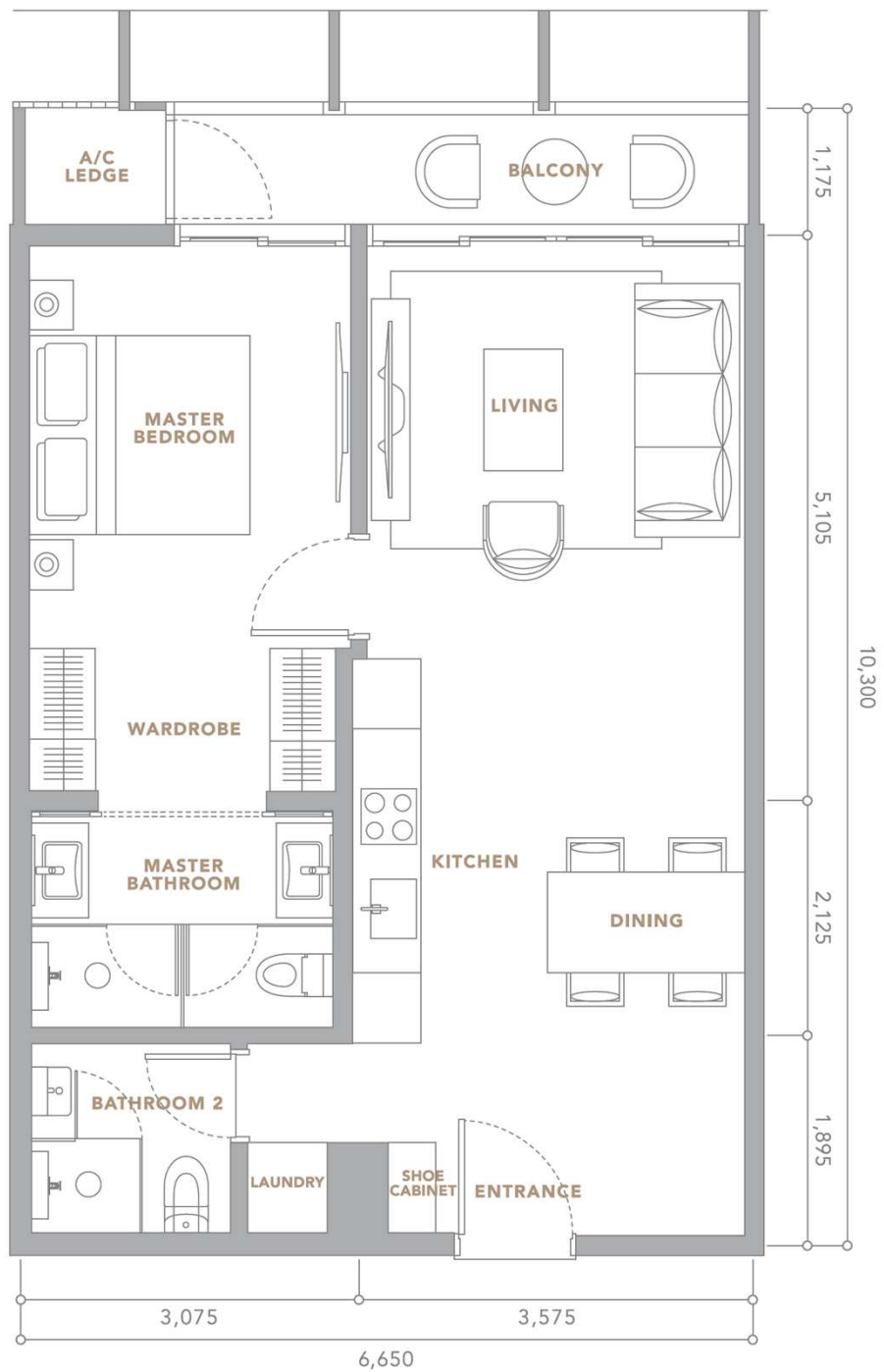


SOUTH WEST



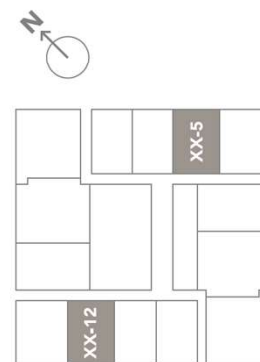
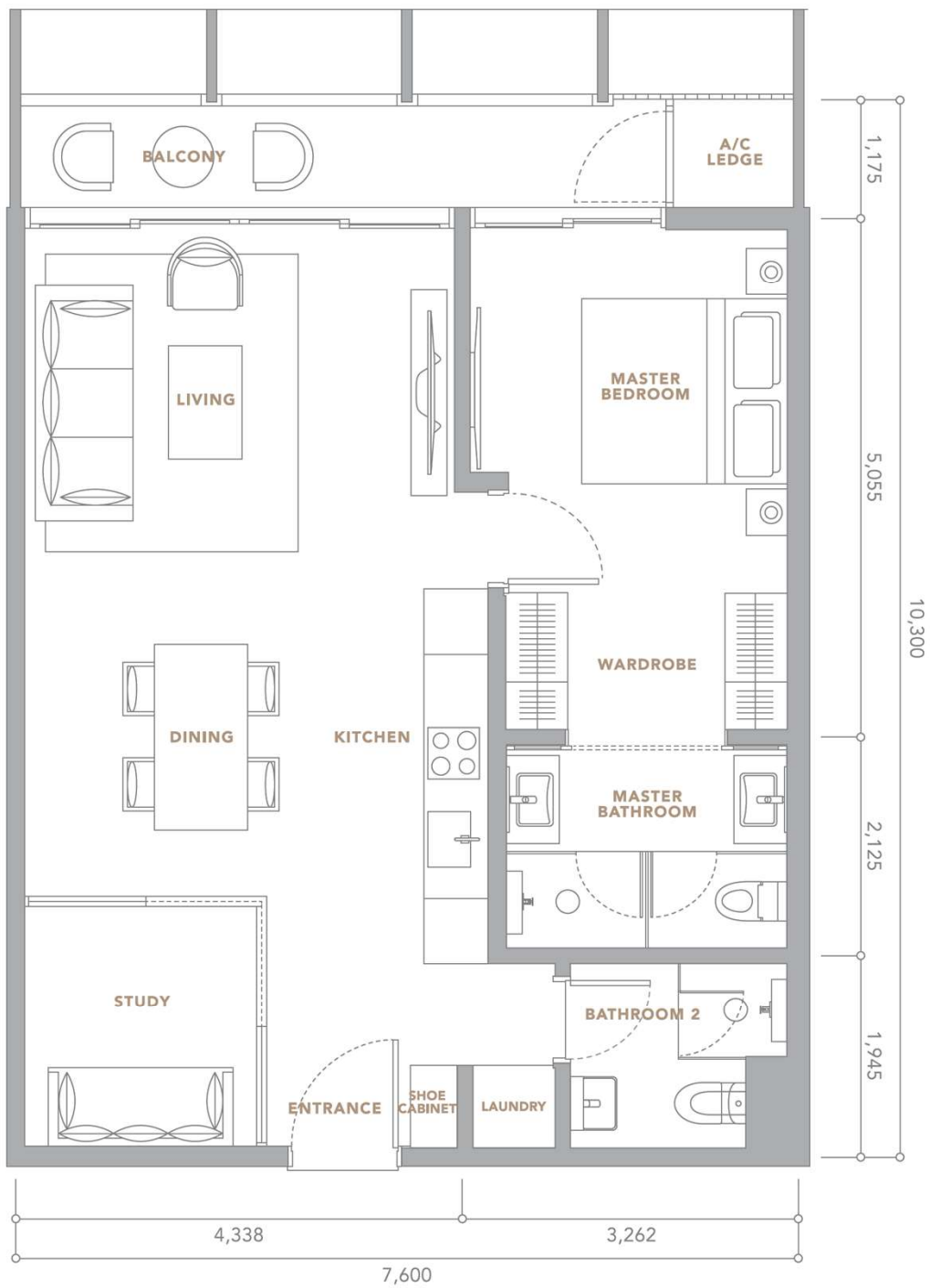






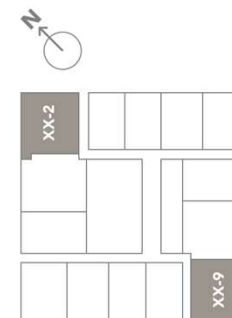
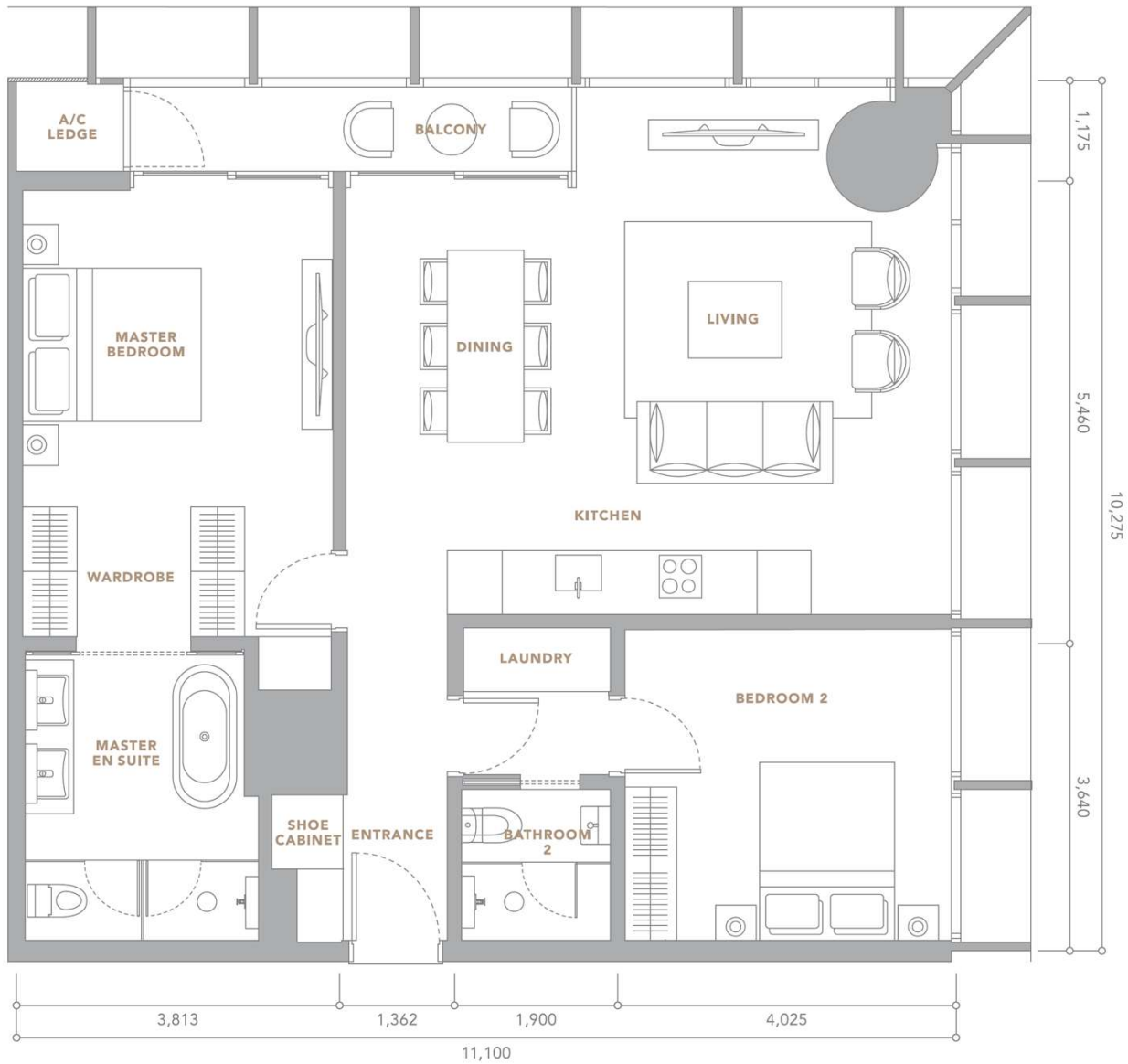
TYPE A1

1 BEDROOM
69 SQ.M. / 743 SQ.FT.



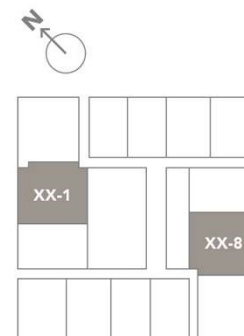
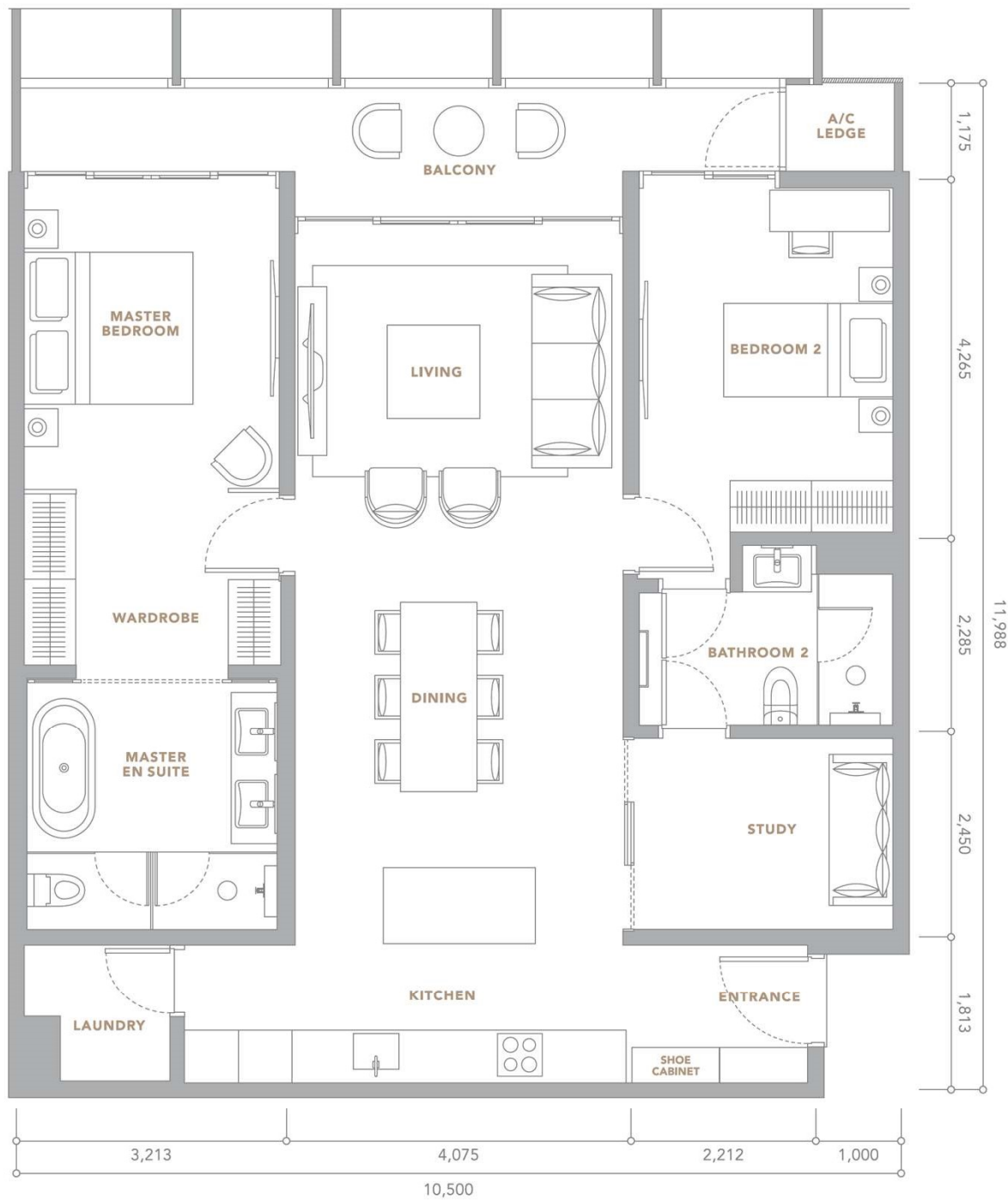
TYPE B2

1+1 BEDROOM
78 SQ.M. / 840 SQ.FT.



TYPE C

2 BEDROOMS
112 SQ.M. / 1,206 SQ.FT.



TYPE D

2+1 BEDROOMS
124 SQ.M. / 1,335 SQ.FT.

Listed on Bursa Malaysia, the E&O Group is a premier lifestyle developer of exclusive addresses in Kuala Lumpur, Penang and Johor in Malaysia, and in London.

In Kuala Lumpur, its landmark properties include The Mews, St Mary Residences, Dua Residency, Idamansara and Seventy Damansara, all located in the most prestigious neighbourhoods of the capital city.

In Penang, E&O's award-winning Seri Tanjung Pinang is now a highly sought-after masterplanned, seafront address with an international community of over 20 nationalities. In Johor, E&O has embarked on the development of Avira in Bandar Medini Iskandar, which enjoys easy accessibility via the Second Link to Singapore. E&O's international foray is focused within prime locations in London, including Princes House along Kingsway, ESCA House in Bayswater, and a significant commercial property in Hammersmith.

E&O's leading position is derived from its namesake, the iconic Eastern & Oriental Hotel, a cherished heritage landmark in George Town, Penang, established in 1885. The Group has further leveraged on its experience and expertise in hospitality management with the opening of E&O Residences serviced apartments in Kuala Lumpur.

www.easternandoriental.com

TOP TO BOTTOM (L-R)

Eastern & Oriental Hotel, Penang

Seri Tanjung Pinang, Penang

Princes House, London

The Mews, Kuala Lumpur City Centre

Quayside Seafront Resort
Condominiums, Penang





Mitsui Fudosan has its origins in Echigo-ya, a clothing store opened in 1673 in what is now the Nihonbashi district of Tokyo. In 1941, the real estate division of Mitsui Company was separated from the parent company and Mitsui Fudosan Co., Ltd. was established.

Today, Mitsui Fudosan Group is Japan's largest real estate developer with a history of innovation that has kept it at the forefront of the real estate industry. Throughout the years, Mitsui Fudosan was responsible for the sponsorship of Japan's first REIT, the development of Japan's first factory outlet, Tokyo Disneyland, Japan's first regional shopping mall, and first office skyscraper.

As an all-rounded property industry player, Mitsui Fudosan Group has an established portfolio of hotels and resorts worldwide. The Group currently operates 26 hotels and 6,701 rooms across Japan under its Mitsui Garden Hotels and The Celestine Hotels brands. It also develops and manages a number of renowned hotels and resorts such as Amanemu Japan, The St. Regis Hotel and Residences, Singapore and Halekulani Hawaii. The Group has also developed its business through participation in residential projects in US, UK, Singapore, Malaysia, Thailand, Indonesia, Philippines, China and Taiwan in recent years.

www.mitsuifudosan.co.jp/english/

TOP TO BOTTOM (L-R)

Mitsui Honkan, Tokyo, Japan

The St. Regis Hotel & Residences, Singapore

Tokyo Midtown Hibiya, Japan

Amanemu, Shima-shi, Japan



For More Information, Please Visit:
E&O Gallery
211A, Jalan Tun Razak
50450 Kuala Lumpur, Malaysia
T +603 2181 8881 / +6017 266 1188
E enquiry@theconlay.com

DISCLAIMER : The information contained herein is subject to change and cannot form part of an offer or contract. All pictures, sketches and illustrations here are artists' impressions only and are not intended to be representations of fact. Whilst every reasonable care has been taken in providing this information, the developer shall not be held responsible for any inaccuracies and changes as may be required by the authorities. Prospective purchasers are advised to read the terms and conditions of the Sales and Purchase Agreement carefully with regards to the common facilities/services and the design layout plans before signing the Sales and Purchase Agreement.

Developer: Patsawan Properties Sdn Bhd (61111-T) • Developer's Address: Level 3A (Annexe), Menara Milenium, 8 Jalan Damanlela, Damansara Heights, 50490 Kuala Lumpur, Malaysia. T: +603 2095 6868 F: +603 2095 0293 • Developer's License: 19758-1/09-2021/0815(L) (Validity Period: 06/09/2019 – 05/09/2021) • Land Tenure: Freehold • Expected Date of Completion: February 2024 • Approving Authority: Dewan Bandaraya Kuala Lumpur (Reference No.: BP T3 OSC 2018 2005) • Sales & Advertising Permit: 19758-1/09-2021/0815(P) (Validity Period: 06/09/2019 05/09/2021) • Land Encumbrances: NA • Total Units: 491 units • Selling Price (RM): RM1,460,000 (Min); RM8,780,000 (Max) • Development Type: Serviced Apartment.